

Updates on Crew Change in Singapore

30 March 2022

1 April 2022 onwards

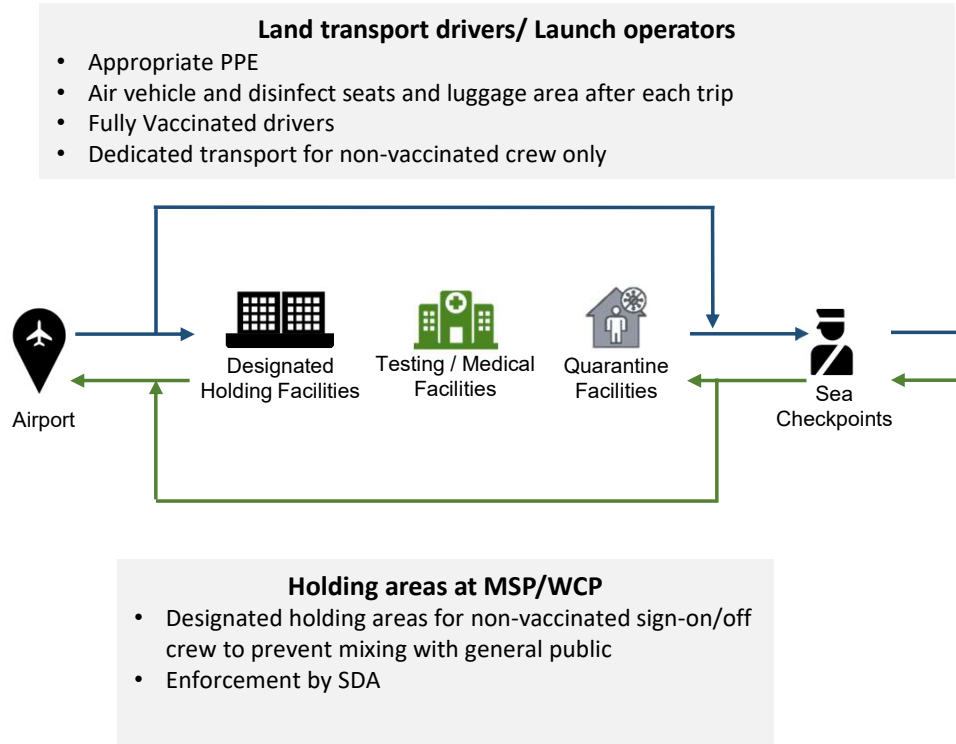
- For **Fully vaccinated** crew, please do not submit any application and proceed directly to apply via ICA Crew System using DigitalPort@SG. For more information, please click the following link:
<https://safetravel.ica.gov.sg/arriving/general-travel/fully-vaccinated>
- Only **NON-VACCINATED** crew change applications must be submitted to MPA in advance of the planned crew change.
- Please see the link for the list of accepted COVID-19 vaccinations:
<https://safetravel.ica.gov.sg/health/vtsg>

Unvaccinated Crew Change Safe Corridor

Home country

Sign-on requirements

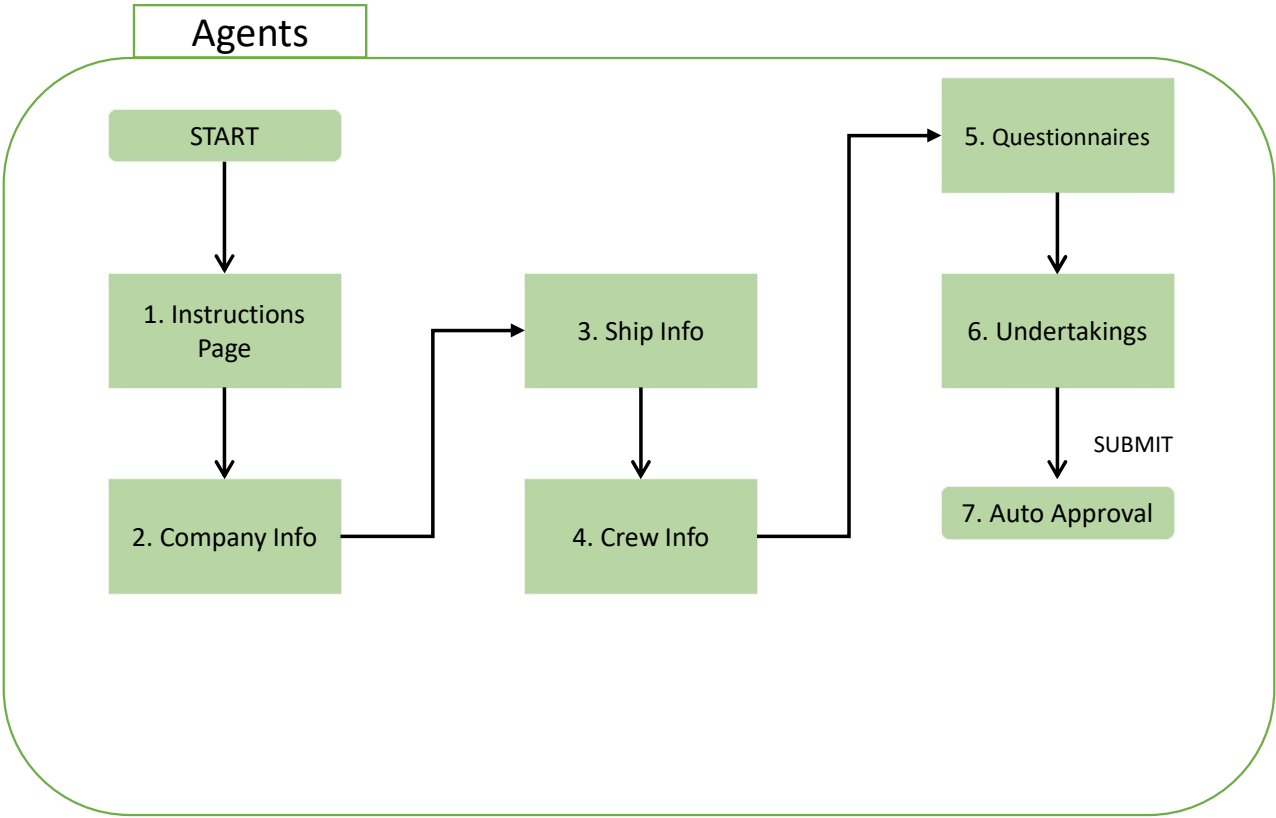
- 7 days SHN
- Negative PCR/ART test within 2 days before flight
- Engage Meet and Greet



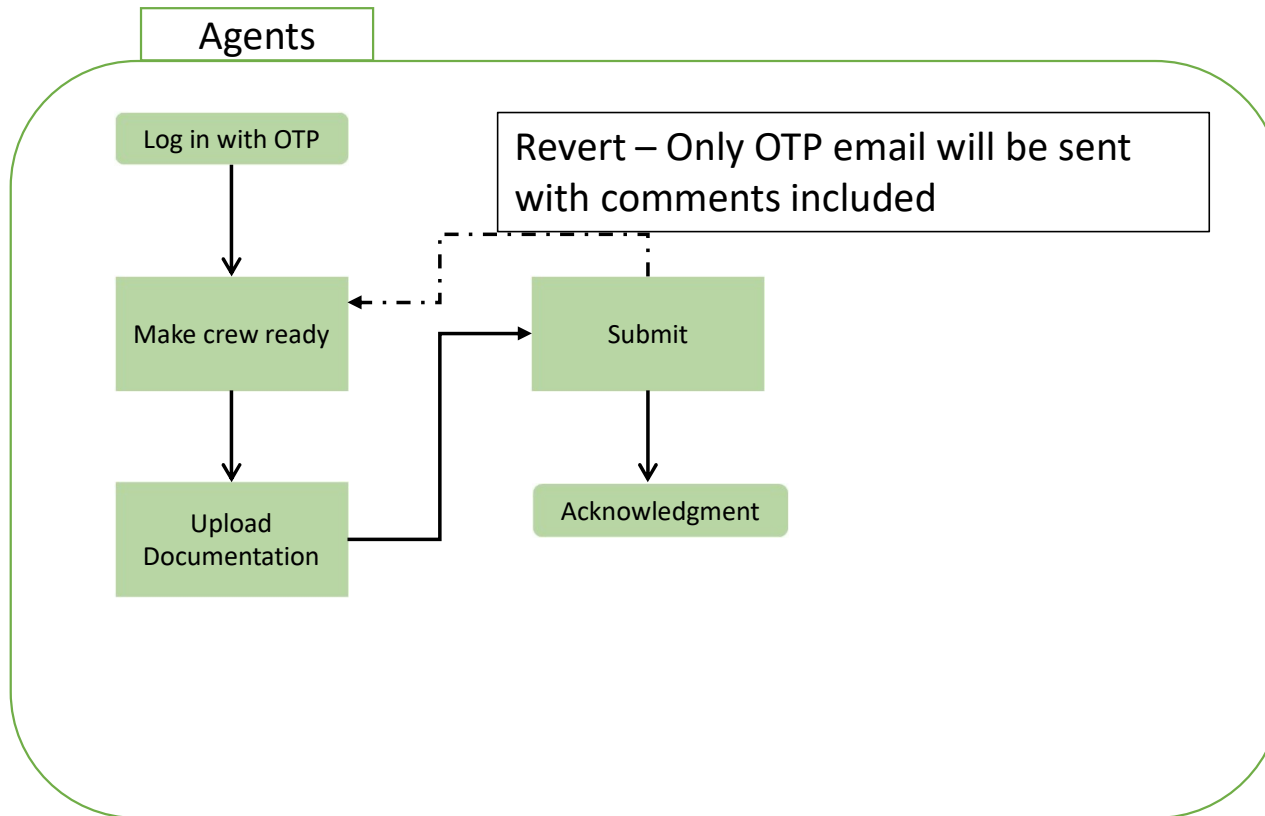
Singapore



Crew Change System Flow – Agents (Step 1)



Crew Change System Agents



Sign on

Sign on process for ICC crew change (WEF 1 Apr 2022)

Step		Fully vaccinated	Fully vaccinated and Recovered (D7 to D90)	Non vaccinated and recovered (D14 – D90)	Non vaccinated
1	Application	Obtain in-principle approval from ICA		Apply through MPA crew change system and concurrently obtain in-principle approval from ICA	
2	SHN	NA. NO SHN	NA. NO SHN	7 days at country of domicile. MUST DO 7 DAYS SHN	
3	PDT	Pre-Departure Antigen-Rapid Test (ART) or Polymerase Chain Reaction (PCR) Test within 2 days ^[1] before departure for Singapore. Recovered crew may be exempted.			
4	Visa/ e-HDC	Onus lies on agents to check that crew has a valid visa before submitting a sign on application to ICA. Crew from visa required countries/regions are required to possess a valid visa before allowing entry into Singapore. Crew will be refused entry if he does not possess a valid visa during arrival immigration clearance even though the sign on application is approved by ICA.			
5	Arrival Singapore	ICA Airport will issue Special pass (SP/LP) and no restrictions to crew movement in Singapore. Crew can be issued up to 7 days SP/LP with valid visa.		Issued with SP. Proceed to ship directly or to MPA's dedicated holding facilities.	
6	Stay in Singapore	No restrictions of choice of hotel in Singapore		Only at MPA dedicated holding facilities	
7	Duration in Singapore	Subject to the SP/LP visa validity issued to the crew by ICA		Not more than 24 hours	
8	Vessel Arrival Singapore	Crew to sign on vessel immediately when the vessel is in port			

Sign off

Sign off process for ICC crew change(WEF 1 Apr 2022)					
Step		Fully vaccinated	Fully vaccinated and Recovered (D7 to D90)	Non vaccinated and recovered (D14 – D90)	Non vaccinated
1	Application	Obtain in-principle approval from ICA.		Apply through MPA crew change system and concurrently obtain in-principle approval from ICA	
2	Visa	Onus lies on agents to check that crew has a valid visa <u>before</u> submitting a sign off application to ICA. Crew from visa required countries/regions are required to possess a valid visa before allowing entry into Singapore. Crew will be refused entry and ask to return to vessel if he does not possess a valid visa during arrival immigration clearance even though the sign off application is approved by ICA.			
3	PDT	If required at next destination, PDT to be taken onboard the ship. Fully vaccinated crew shall have a PCR or ART memo showing negative ART test which is valid for 2 days from date of disembarkation from vessel			
4	SGAC/e-HDC	Crew to submit SGAC/e-HDC at least one day in advance prior to disembarking from vessel for the sign-off. Crew to truthfully declare his vaccination status (be it taken overseas or Singapore) in SGAC/e-HDC. To upload the vaccination documents if available		Crew to submit SGAC/e-HDC <u>at least one day in advance</u> prior to disembarking from vessel for the sign-off. Crew to truthfully declare his vaccination status (be it taken overseas or Singapore) in SGAC/e-HDC. To upload the vaccination documents if available	
5	At ICA checkpoint/Valid Passport *To alert ICA if seamen book is to be used, before submitting the sign-off application	ICA to issue special pass, if crew intends to enter Singapore for purpose of sign off from vessel. Crew must provide the following documents to the ICA officers at arrival for assessment for entry. Crew will be refused entry and asked to return to vessel if any of the entry requirements is not met. (eg. valid overseas/Singapore vaccination cert, valid passport, SGAC/e-HDC). valid visa (if applicable), sign off approval letter, PCR or ART memo showing negative ART test which is valid for 2 days)		Issued with SP with MPA FNO approval. Crew without MPA FNO will not be allowed to sign-off from vessel Proceed to MPA's dedicated holding facilities to serve SHN while waiting for the flight or to airport directly for sign off Crew must provide the following documents to the ICA officers at arrival for assessment for entry. Crew will be refused entry and asked to return to vessel if any of the entry requirements is not met. (eg. valid passport, valid MPA FNO approval, SGAC/e-HDC). valid visa (if applicable), sign off approval letter,)	
6	Stay in Singapore	Can book any hotel in Singapore		Only MPA dedicated holding facility	
7	Duration in Singapore	Subject to the SP validity issued to the crew by ICA.		Subject to the SP validity issued to the crew by ICA . Not more than 24 hours	

Q & A

Thank You